



# COMPACT POOL NICHELESS

Designed for a wide range of applications, Spectrum 360 Nicheless is the most advanced nicheless lighting system available. It's contemporary design and ease of installation make it the perfect choice for new pool construction or for re-modelling older pools. The latest LED technology and thermal management systems have been incorporated to provide vibrant RGB+W performance with maximum energy efficiency.

Spectrum 360 Nicheless is UL certified to be installed in a variety of nicheless fittings, and plug-and-play retro-fitting is made easy by using the unique field-wirable plug kit. Available in fixed colors of White, Warm White, Blue and FFWCC compliant Amber (Turtle Friendly), as well as multi-color options that are compatible with popular third-party controllers.

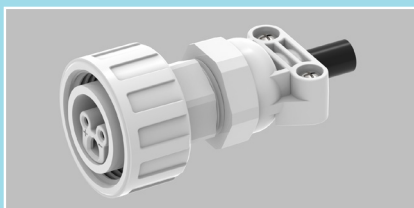
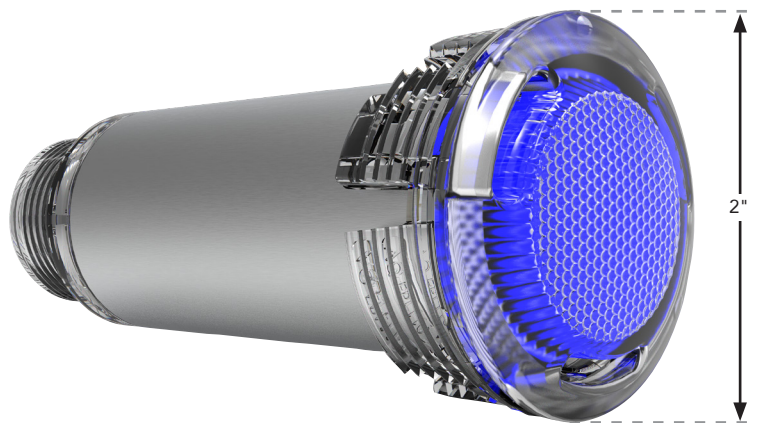


## SPECTRUM 360 NICHELESS - SPECIFICATIONS

MODEL	DESCRIPTION	COLOR TEMP OR WAVELENGTH	LUMENS	POWER CONSUMPTION	INCANDESCENT EQUIVALENT
<b>ALL LIGHTS OPERATE FROM 12V AC ~ 14V AC POWER SUPPLY</b>					
UL Listed for installation with the top of the luminaire lens not less than 100mm (4") below the normal water level of the pool.					
300080-BL	S360 Nicheless - Blue LED light only	470nm	135	12VA	n/a
300081-WT	S360 Nicheless - Cool White LED light only	6,500K	650	12VA	>80W
300086-WW	S360 Nicheless - Warm White LED light only	2,850K	650	12VA	>80W
300087-T	"S360 Nicheless - Amber LED light only (FFWCC Compliant Turtle Friendly) "	>560nm	235	12VA	n/a
300083-P	S360 Nicheless - Multi Color Light - PENTAIR	6,500K	470	13VA	>60W
300084-J	S360 Nicheless - Multi Color Light - JANDY	6,500K	470	13VA	>60W
300085-H	S360 Nicheless - Multi Color Light - HAYWARD	6,500K	470	13VA	>60W

### Maximum Cable Lengths for Spectrum-360 Nicheless LED Lights

NICHELESS	MULTI-COLOR		FIXED COLOR	
	18AWG	14AWG	18AWG	14AWG
<b>12V</b>	120ft	305ft	130ft	330ft
<b>13V</b>	180ft	460ft	195ft	495ft
<b>14V</b>	240ft	610ft	260ft	660ft



An innovative feature of the Spectrum 360 Nicheless Light is its connectivity. The unique and patented waterproof **Plug Kit** is factory fitted to the supply cord, and allows for simple connection and detachment to the rear of the light. Once the new cord is pulled through, the light can simply be disconnected and re-connected as required.

Available 18AWG Cord Lengths are 50ft, 100ft & 150ft.

Pentair, Jandy and Hayward are trademarks of their respective owners.