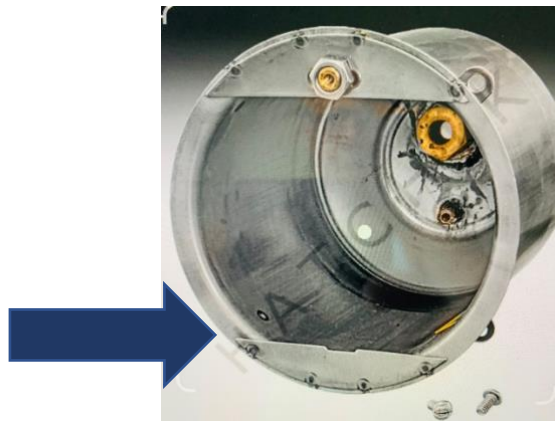


REPLACING A PENTAIR SUNLITE WITH A VLS RETRO POOL LIGHT



To retrofit a Blue Square Vivid Spa light to a Pentair Sunlite;

- 1. Remove the black bracket from light (Shown in picture)**
- 2. Bend down or cut the lower bracket tab on P/A niche**
- 3. Secure light in housing with supplied pilot screw**