

The Vivid 360 LED Nicheless light is specifically designed to fit a 1½" female threaded pool return inlet. Such return inlets can be placed in areas of reduced water depth to provide accent lighting to steps, ledges and tanning shelves. Threaded adaptors supplied with the light make it suitable to retrofit into a variety of nicheless fittings. Unlike traditional "pipe lights" the Vivid 360 LED Nicheless light is convection cooled, allowing for reliable LED operation.

The all-plastic construction of the light eliminates the need for bonding or grounding and ensures safety to pool users. Available in fixed colors of white, warm white or blue, plus multi-color models that can be operated from popular third-party controllers.

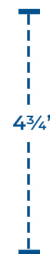
Model	Description	Color Temp or Wavelength	Lumens	Power Consumption	Incandescent Equivalent
ALL LIGHTS OPERATE FROM 12V AC ~ 14V AC POWER SUPPLY <i>UL Listed for installation with the top of the luminaire lens not less than 100mm (4") below the normal water level of the pool.</i>					
300071 – WT	Cool White	6500K	550	11VA	90 watts
300076 – WW	Warm White	2850K	510	11VA	85 watts
300070 – BL	Blue	465nm	180	11VA	N/A
300077 – T	Amber (Turtle Friendly)	>560nm	235	11VA	N/A
300073 – P	Multi-Color PENTAIR (held on white)	6,000K	425	18VA (20VA max)	70 watts
300074 – J	Multi-Color JANDY + WALL SWITCH (held on white)	6,000K	325	15VA (20VA max)	50 watts
300075 – H	Multi-Color HAYWARD (held on white)	>10,000K	400	19VA (20VA max)	65 watts

## MAXIMUM CABLE LENGTHS For VIVID 360 LED Nicheless Lights

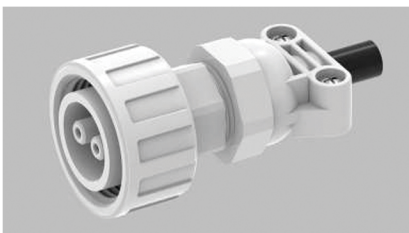
Voltage	18AWG	14AWG	18AWG	14AWG
	MULTI-COLOR		FIXED COLOR	
12V	70ft	180ft	140ft	360ft
13V	110ft	250ft	200ft	540ft
14V	145ft	390ft	280ft	700ft



VIVID 360 LED Nicheless  
Pool Light



Plug Kit factory-fitted on  
18AWG Cable



## VIVID PLUG KIT - NICHELESS

An innovative feature of the Vivid 360 LED Nicheless Light is its connectivity. The unique and patented waterproof Plug Kit is factory fitted to the supply cord, and allows for simple connection and detachment to the rear of the light. Once the new cord is pulled through, the light can simply be disconnected and re-connected as required. Available 18AWG Cord Lengths are 50ft, 100ft & 150ft.

Pentair, Jandy and Hayward are trademarks of their respective owners.