

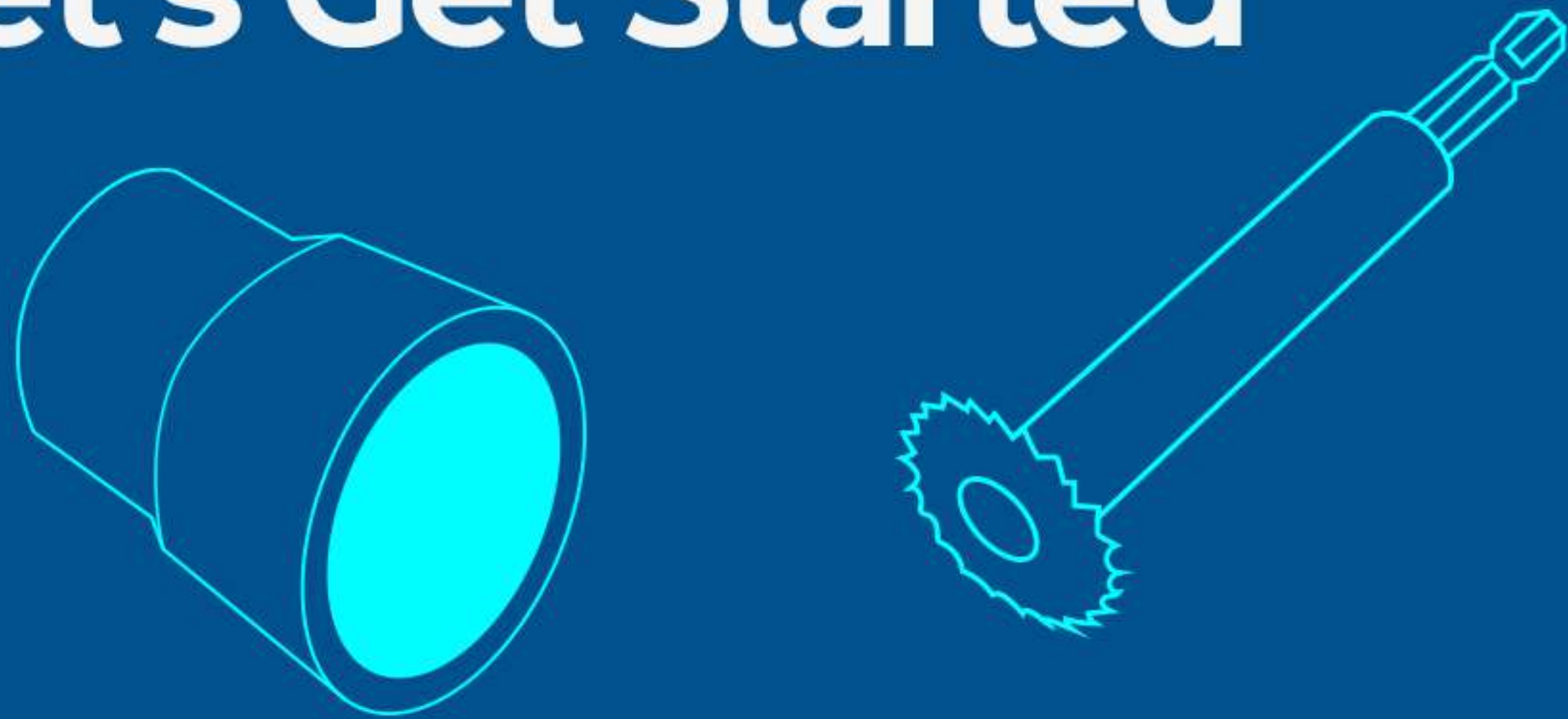


## C-5 ADAPTER FOR 5 PORT VALVE ADAPTER INSTALLATION



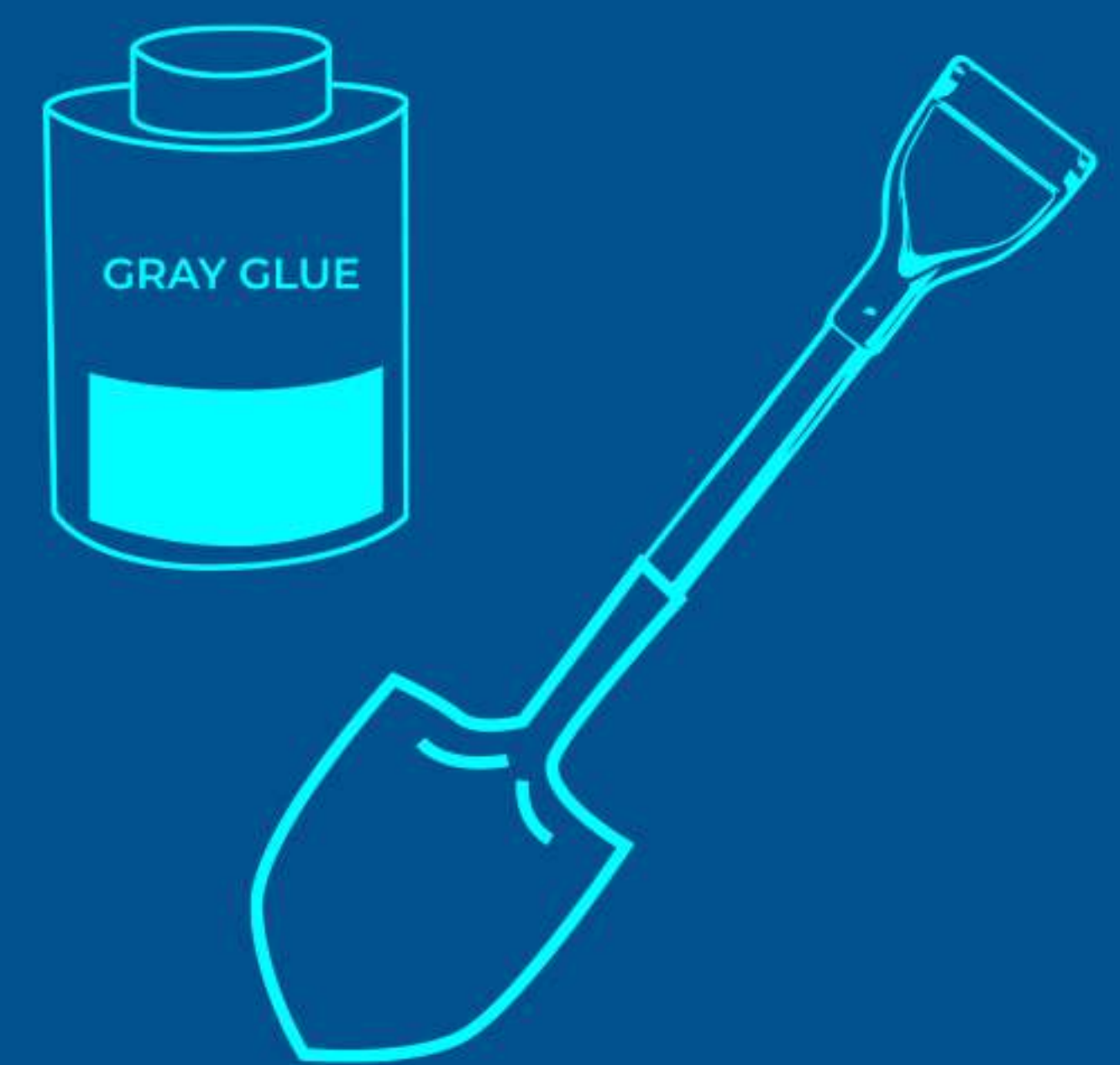
The R360 C-5 Adapter and the Q360 Variable Speed Water Valve Assembly is designed to replace old fashioned piston valves, ball valves or flapper valves. Replacing these old style valves will revitalize your In-Floor Cleaning and Circulation System and allow up to 12% more water flow for the same energy dollar. It will also allow for a greater cleaning radius and smoother pressure transition in nearly every application.

### Okay, Let's Get Started



### Tools Needed

- Internal Diameter PVC Cutter, Wire Saw or Hacksaw.
- 1-1/2" Pipe extenders, (5)
- Medium Heavy Body Gray Glue & compatible Primer
- Spade or small shovel



### KEY REQUIREMENTS

This R360 C-5 Adapter / Q360 Water Valve Assembly is designed to replace 5-port valves with 1 - 1/2" plumbing. If you do not have a 5-port existing valve with 1 - 1/2" plumbing you need a different assembly. *Please contact us to make arrangements for the proper parts.*

An installation with each zone allowing 35 GPM of flow or more will work best. Zones with only 1 jet may need a special nozzle to allow for more flow.

### WARNING

**Be careful to make sure the elevation of your plumbing cuts are above water level. If not it will be necessary for the pool water level to be lowered. Failure to do this will cause severe flooding of your work area.**

## IMPORTANT TIPS TO MAKE YOUR PROJECT A SUCCESS:

1. Each of the 5 pipes should be cut flat and all at the same elevation.
2. Each of the 5 pipes should be free of burrs, debris or old glue.
3. If you do not have 2" of available 1 - ½" pipe you may need to use pipe extenders in order to give you enough surface area for a secure glue joint. All 5 pipes will need to be lengthened to the same elevation.
4. You also may need to remove water from the interior of some of the pipes so that the pipes remain dry while plumbing.
5. Use a compatible primer on all glue surfaces to make sure they are clean and ready for glue.

## INSTALLATION

- 1** Evaluate the old valve location. The valve location should allow room enough to dig down to the plumbing and allow a clean straight cut just below the bottom plate. You will need at least 2" of clean pipe for a proper glue joint. A wire saw or an inside pipe cutter will be helpful to simplify the cutting off of the old valve in some installations. *Make sure the temperature range is compatible with the glue instructions.*
- 2** If you do not have open access at least two inches of the 1 - ½" pipes below the bottom plate of the existing valve, dig down to where you have room for a clean straight cut. An inside pipe cutter may help you to cut each pipe from above the valve and simplify the project.
- 3** Remove the union fitting or cut the inlet pipe to the top of the existing water valve. Take special care to cut the pipe in a way to allow that pipe to be reconnected to the inlet of the Q360 water valve.
- 4** Cut all five 1 - ½" pipes just below the bottom plate of the existing valve. Using the glue joint of bottom plate as a guide will help to give you a straight cut.



### NOTE

***It is very important that all five pipes are cut at the same elevation in order to provide an adequate amount of surface area for a proper glue joint.***

- 5** Slide the R360 C-5 Adapter Alignment Tool over the five 1- ½" pipes to hold them in the proper pattern and spacing. You may leave the Alignment Tool in place after the installation or remove afterward.
- 6** Dry fit the R360 C-5 Adapter / Q360 Water Valve Assembly to make sure all 5 pipes fit properly. Use this time to consider the inlet pipe location in relation to the existing inlet line. Rotate the R360 C-5 Adapter Assembly so the inlet is in the best location for plumbing the inlet.
- 7** Apply a liberal amount of the medium or heavy bodied gray glue to the 5 pipes and the 5 sockets located on the bottom of the R360 C-5 Adapter Assembly. Make sure all surfaces are coated with glue. Put the assembly on the 5 pipes right way and make sure all 5 pipes push into the R360 C-5 Adapter Assembly to full stop.

### DO NOT USE FAST SETTING OR HOT GLUES

***Hold the assembly down or put a weight on the assembly to hold it in place and allow the glue to cure for at least 15 minutes.***

- 8 Plumb the inlet to the R360 C-5 Adapter Assembly using the least amount of fittings possible to reduce friction loss.
- 9 Allow the glue joints adequate time to properly cure. (see glue manufacturers instructions)
- 10 Remove the jets in the floor of the pool before restarting the system so you can flush out any debris that may have fallen into the plumbing during the process. Take care to keep track of the jets so they are returned to the exact same position in the pool.

## NOTE

**Failure replace the jets in the exact same location may cause the system to exceed safe pressures or the system may not clean well.**

*Allow the system to run this way for two hours at high speed with valves adjusted so 100% of the water flow is directed to the R360 C-5 Adapter / Q360 Assembly. Make sure that the Turbine in the valve is visibly spinning. If it is not you may have to remove the band clamp and inspect the Gear Drive for glue or debris.*

- 11 Reinstall the jets into the collars in the floor of the pool. Observe the jets and the R360 C-5 Adapter / Q360 Valve assembly to make sure there is no leaking from the glue joints or the band clamp.
- 12 The R360 C-5 Adapter / Q360 Assembly is pressure tested at the factory to ensure that all pre-glued joints are secure. The band clamp can be tightened to within a 1/4" from the band touching under the bolt if needed.

## Questions?

Check out our video:  
[bluesquaremfg.com/technical-documents](https://bluesquaremfg.com/technical-documents)

The experts at Blue Square Manufacturing are available to help you make your project a success. Please contact us at our toll free number if you have question regarding this process.